



PSDA Photo Contest

UNDERSTANDING THE PROCESS AND
SUBMITTING YOUR ENTRIES EACH YEAR



Current smart phones take great photos – you don't always need a camera.

A photograph of a golf club, specifically a driver, lying on a dark, textured fabric. Instead of a golf ball, a white dahlia flower is placed on the club's head. The image is part of a presentation slide with a purple gradient background.

What you do need is imagination!

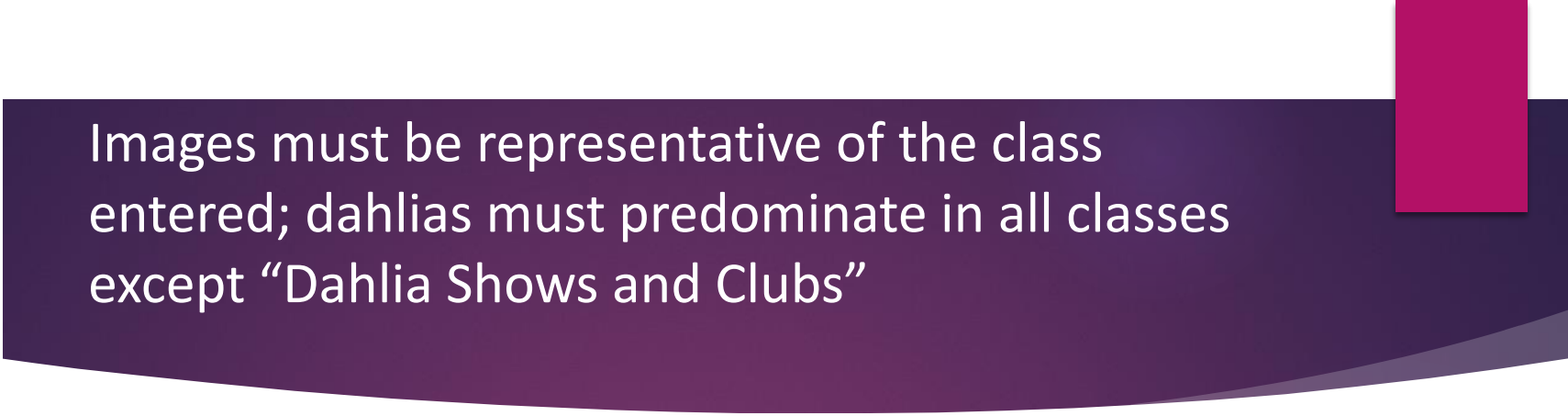
Photo by Kathy McMullen entered as
Class-Dahlias in other places

It is also important to review the rules for photos to be entered.

- ▶ **The entries are digital with only two divisions: *amateur* and *open*. The classes will be the same for both divisions.**
- ▶ **Amateur division:** The amateur division is open to those who have not entered more than three previous PSDA photo competitions. An amateur may not be a professional photographer or photography instructor.
- ▶ **Open division:** The open division can be entered by anyone but is mandatory for those who have entered more than three previous PSDA competitions.

Getting started

1. Competition is open to all Puget Sound Dahlia Association and Federation of Northwest Dahlia Growers members.
2. Photos must be the contestant's own work.
3. All images must have been taken during the current or previous year's growing season.
4. Images may not have been submitted to previous years' PSDA photo contests or have won in other Federation club or ADS photo contests in a previous year.



Images must be representative of the class entered; dahlias must predominate in all classes except “Dahlia Shows and Clubs”

1. **NEW INTRODUCTIONS OR UNDISSEMINATED DAHLIAS** – introductions from the current or past growing seasons (2022 or 2023) or unnamed seedlings. Only one variety should appear in the image, and petals should not extend beyond the picture edge. Your focus is on the dahlia form, color, and quality of the bloom.
2. **DAHLIA PORTRAITS** – any single dahlia listed in the ADS *Classification and Handbook of Dahlias* or past ADS listings. Only one variety should appear in the image; petals should not extend beyond the picture edge. The dahlia variety must be identified. Your focus is on the dahlia form, color, and quality of the bloom.

Dahlia portraits

Image by Robert Rutkin



Classes intended for multiple blooms

3. **MULTIPLE BLOOMS** – More than one variety or more than one bloom of a single variety; make sure to identify these when you can.

This class is meant to emphasize the blooms rather than a garden setting.

4. **DAHLIA GARDENS** – note the location of the garden and, when possible, identify any persons shown; the dahlia garden is the focus of the image.

This class is meant to emphasize the garden rather than a few individual blooms.

Multiple Blooms

Images by Robert Rutkin and Linda Cles



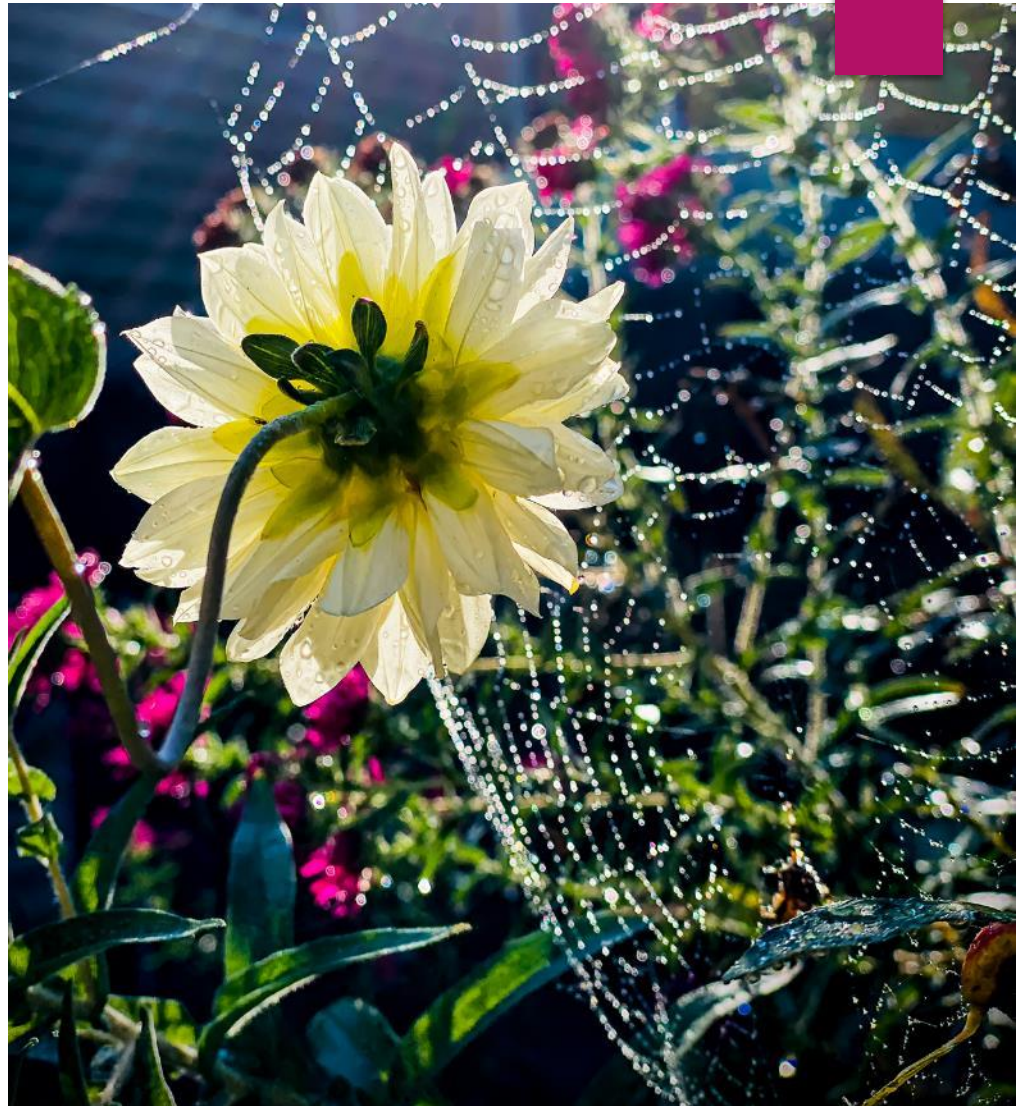
Gardens

Image by Kathy McMullen
First Place, 2022



Gardens

- ▶ Image by Leia Smith
- ▶ This image, entitled Garden after the rain, may have done better if entered in the artistic impression category
- ▶ Second Place 2022



Club Activities

Images by Robert Rutkin and Linda Cles

5. DAHLIA SHOWS AND CLUBS – pictures of club events and any dahlia exhibition accepted (no photos of individual entries, please). Identify recognizable individuals and location or club. **Good photos may reflect a story or activity.**



Kids and critters

Image by Leia Smith and Louise Henriksen

6. KIDS & CRITTERS – Dahlia garden visitors — children and critters in the dahlia garden or seen with dahlias. Dahlias must be prominent in image to qualify.



Dahlias in Another Setting

Images by Linda Cles, Kathy McMullen and Robert Rutkin

7. DAHLIAS IN ANOTHER SETTING – be creative! Place your dahlia(s) in a setting where it catches the imagination. Images may be described as a “still-life” that includes dahlia(s) or an image taken outside of club activities such as the Pike Place Market, a table setting including dahlias, or a wedding bouquet. Do not submit images of the dahlia garden or dahlia shows in this category.



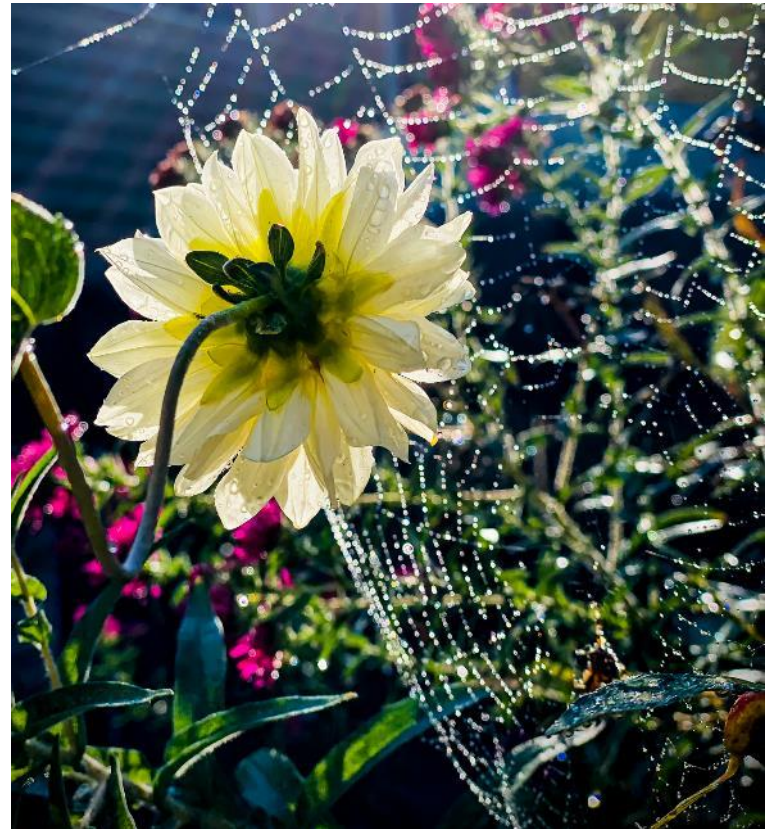
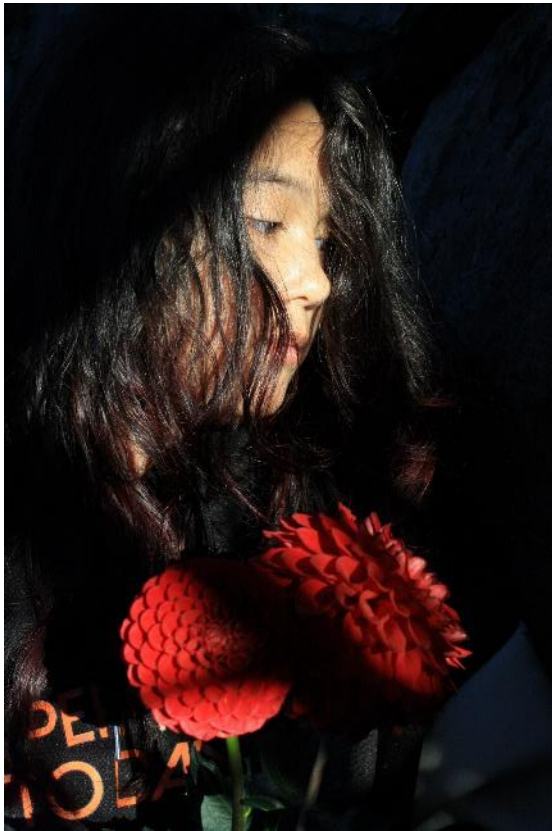
Artistic Impression

**8. ARTISTIC IMPRESSION:
ORIGINAL OR DIGITALLY
ENHANCED** - an enhanced
image is one that is altered in
creative ways. If you apply
filters, change colors, cut and
paste, or in any other way
change your photo, it belongs
in this category. Remember:
photos in this category do not
need to be enhanced. Any
original photo which creates an
artistic impression with little or
no manipulation is also desired.
Digitally enhanced images must
still reflect an image of a
dahlia(s).



Artistic Impression

Images by Robert Rutkin, Alysia Obina and Leia Smith



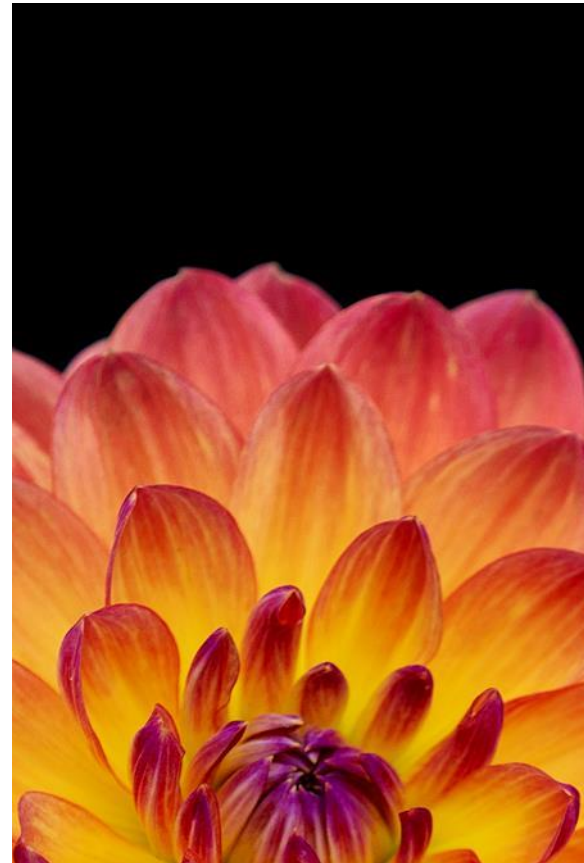
Macro View

Images by Leia Smith and Hanna Abrahamson

9. MACRO VIEW – close-up of part of a dahlia bloom; may include insects or other interesting elements relating to dahlia culture. Macro photos focus on a portion of the dahlia where form and balance are expressed in the image.



Macro Images and use of cropping



Challenge Flower

10. PSDA & SDS CHALLENGE FLOWER for the following year – images that you would consider for use in a Dahlia Show Poster.

- ▶ This category is intended to provide photos for the next years PSDA and Seattle Show. At this point we have not had great participation and may be discontinuing it if this does not change.
- ▶ We are looking for photos that can be used in a poster so they must be well balanced and easily formatted into a poster. I would recommend dahlia portraits of either single, or in the case of open centered dahlias, multiple blooms.
- ▶ Photos must be clean, without distracting backgrounds. Avoid photos that include stakes, twine, hands, supporting the flower. We want the audience to concentrate on the bloom, not on the garden and all of its distractions.

Cropping slides

- ▶ Take your image with more background than is needed.
- ▶ Examine the image for distractions.
- ▶ Using an image editor, crop your image to achieve the best balance and remove distractions.

FREE PHOTO EDITORS:

- ▶ Gimp
- ▶ Photopea
- ▶ Pixlr
- ▶ Fotor
- ▶ Krita
- ▶ Snapseed (*mobile phone*)

Example of image needing cropping



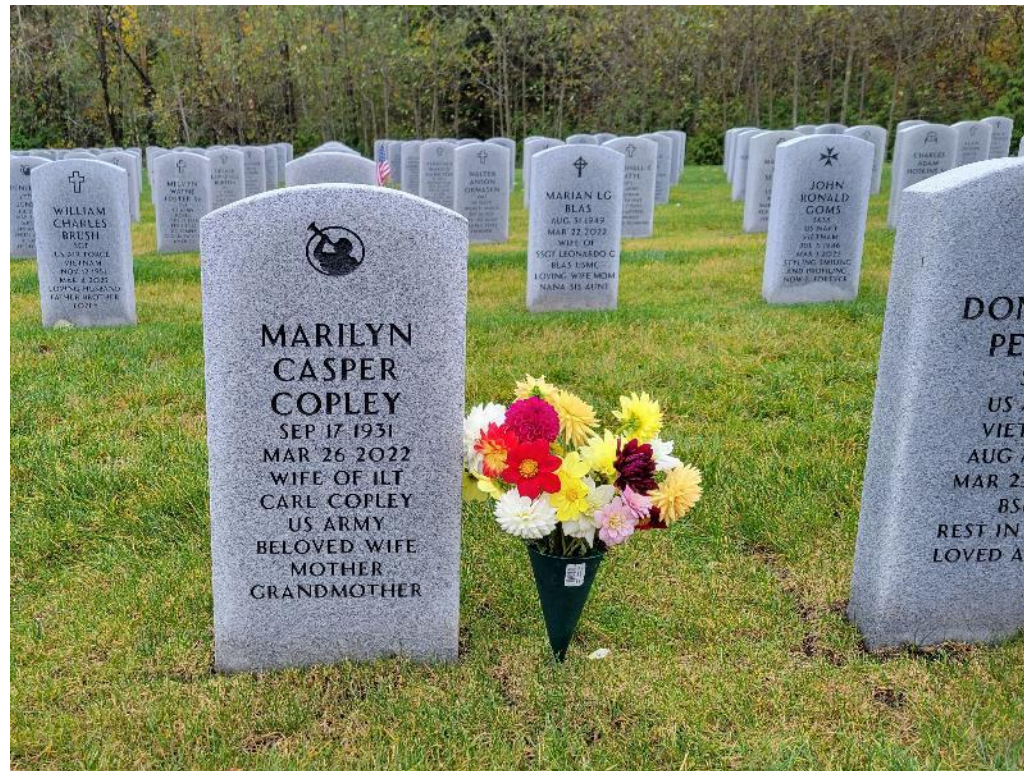
Negative
space

Dark stakes

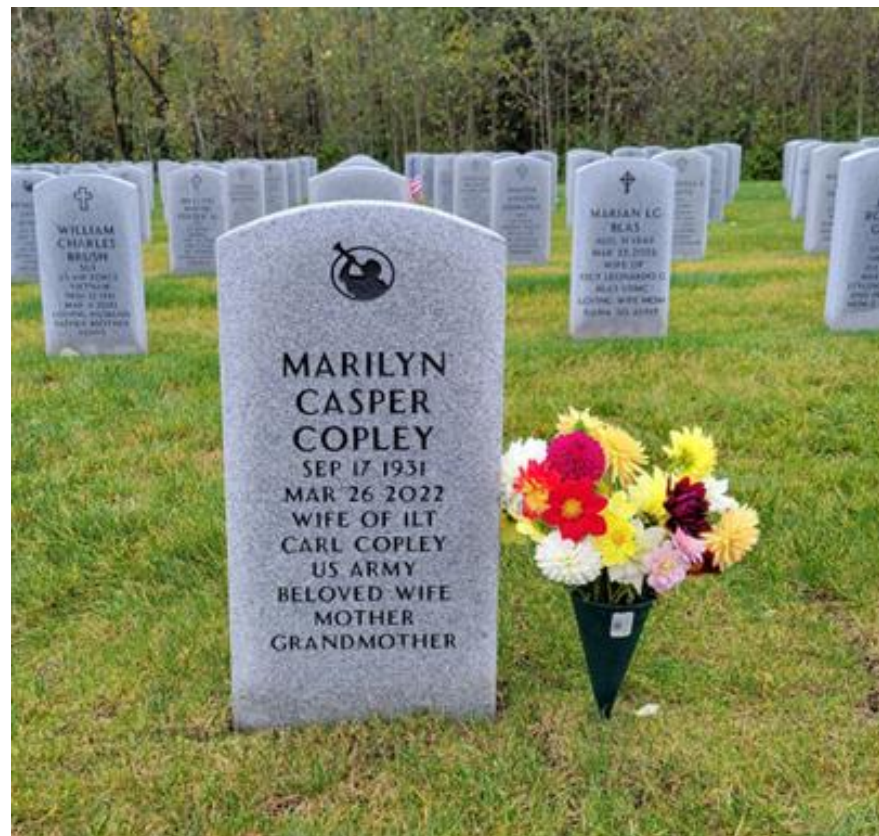
Cropped image - distractions



Example of image needing cropping

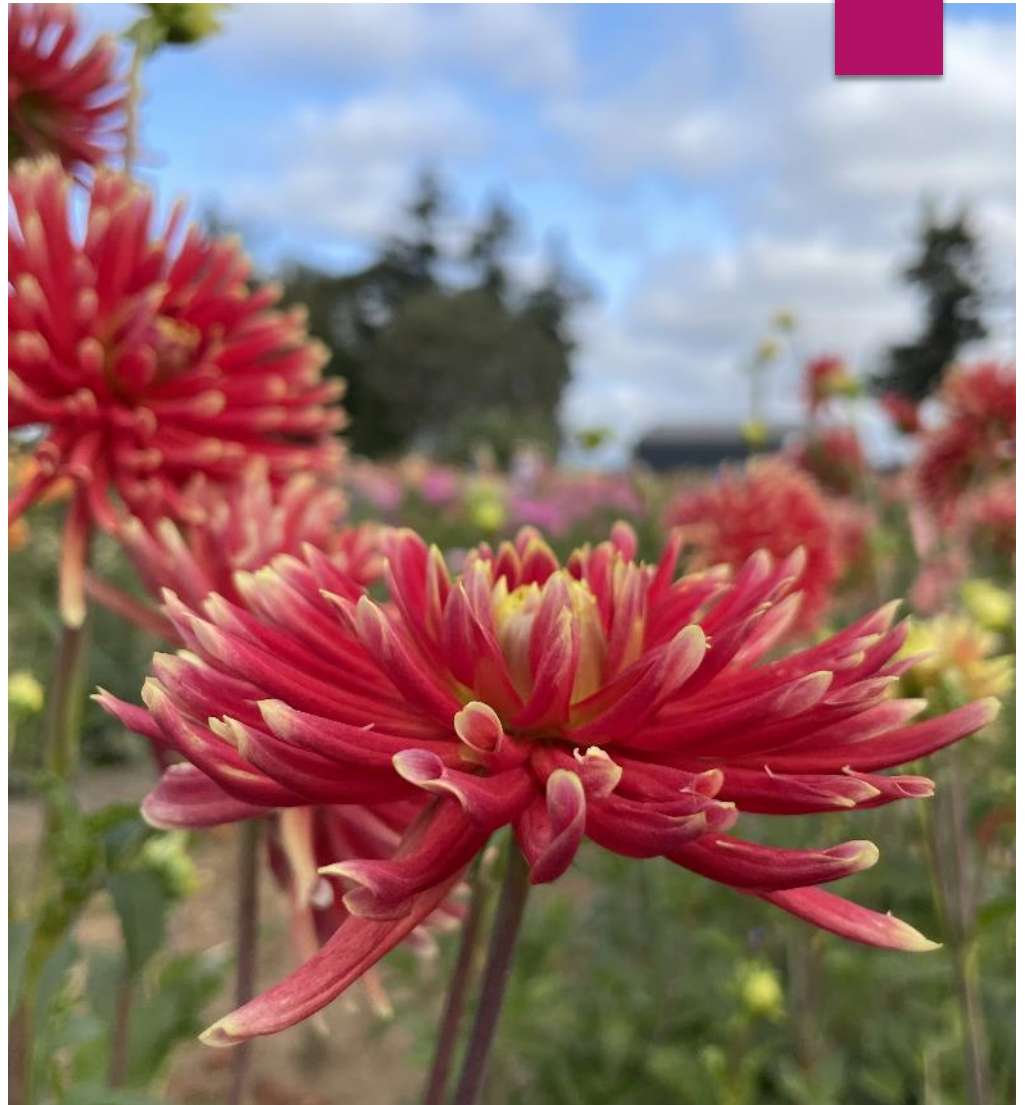


Cropped to achieve balance



Depth of Focus

- ▶ Consider your depth of focus when taking a photograph.
- ▶ If you are taking only an image of one dahlia it is reasonable to have a fuzzy background.
- ▶ If you are attempting a “Garden” image you need to increase your depth of focus.



Choosing images to submit to the PSDA competition:

1. Images must be representative of the class entered; dahlias must predominate in all classes except Dahlia Shows and Clubs.
2. Each entrant may submit no more than **FIVE** images in each class.
3. A total of no more than 40 images may be submitted by an entrant.
4. Files must be in **.jpg format**. Photos should have a resolution of at least 150 dpi for best reproduction. All digital images submitted must be readable by PC-based applications. Limit File size to a maximum of 5000 KB per image. If you need to reduce file sizes, use a photo editor.
5. Photos entered in classes other than Class 8 that have been digitally altered beyond standard optimization (for example removal of dust, cropping, reasonable adjustments to exposure, color, and contrast) will be disqualified.

Labeling Images

1. An Entry Class number is required for identification of the class entered. Note this is not the classification number from ADS. If you enter more than one photo in a class, designate the class as 1a, 1b, 1c, 1d, 1e etc. Classes are identified as numbers 1 through 10.
2. **Shorten image filenames to 15 characters or fewer. Do not include your name or any other personal identifier as part of the filename. Do not use camera image numbers as file names.** Entries are judged blindly by the judge(s) so please make sure that the file names are not written in a manner where judges can easily identify all images entered by one contestant (example – all CAPS). ADS requests file names that include the dahlia variety name, but this can be confusing if multiple images of the same variety are received from more than one individual.
3. Example of a file name for class 2 image of Pam Howden:
2a_pam howden

Spreadsheet listing of images submitted

Submit a separate electronic file (preferably an Excel spreadsheet) listing entries by Division, Entry Class, Filename, and Description. Make sure to distinguish between 0 (zero) and letter O and check your list against the file names entered. Do not mix up use of a *dash* and an *underline* in your file names. **Filenames used on the image must match those listed on the spreadsheet.** Note that an electronic file is preferred to hardcopy or PDF file as I will have to retype those.

Division Am or Op	Entry Class Number 1-10 (a-e)	File Name Maximum 15 digits	Description: Dahlia name, Individual in image, comments, etc.	Slide show presentation, Image name Maximum 30 digits
Am	2a	pam howden	Pam Howden	Pam Howden
Am	3b	pam_cameo	Pam Howden and Cameo	Pam Howden and Cameo in my garden

Submitting images and image disqualification

1. Some entry classes request identification of each dahlia in the image; this enables PSDA to use the image for club purposes. Exceptions may be made for amateur photographers. If identification is not available, list it as unknown.
2. Failure to follow the rules will result in the disqualification of the affected entry. In cases where **more than 5 images** for a given class are submitted, only the first 5 entries listed will be accepted in the class.
3. Entries must be submitted on a flash drive or uploaded on Google Drive.
4. A properly completed entry form must accompany the submission, along with any other documentation required by the class entered.



PSDA Photo Contest

QUESTIONS